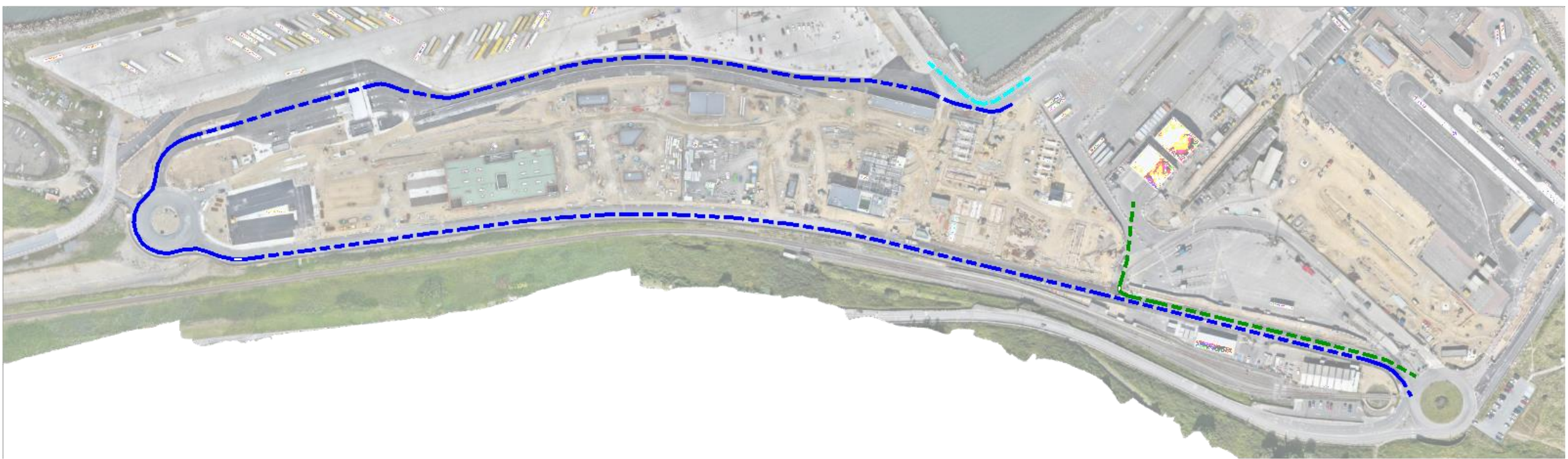


## CHANGES TO FREIGHT CHECK IN

The freight check in route will change from 30th Aug 2024. The image below details the new route to the newly constructed freight check in booths

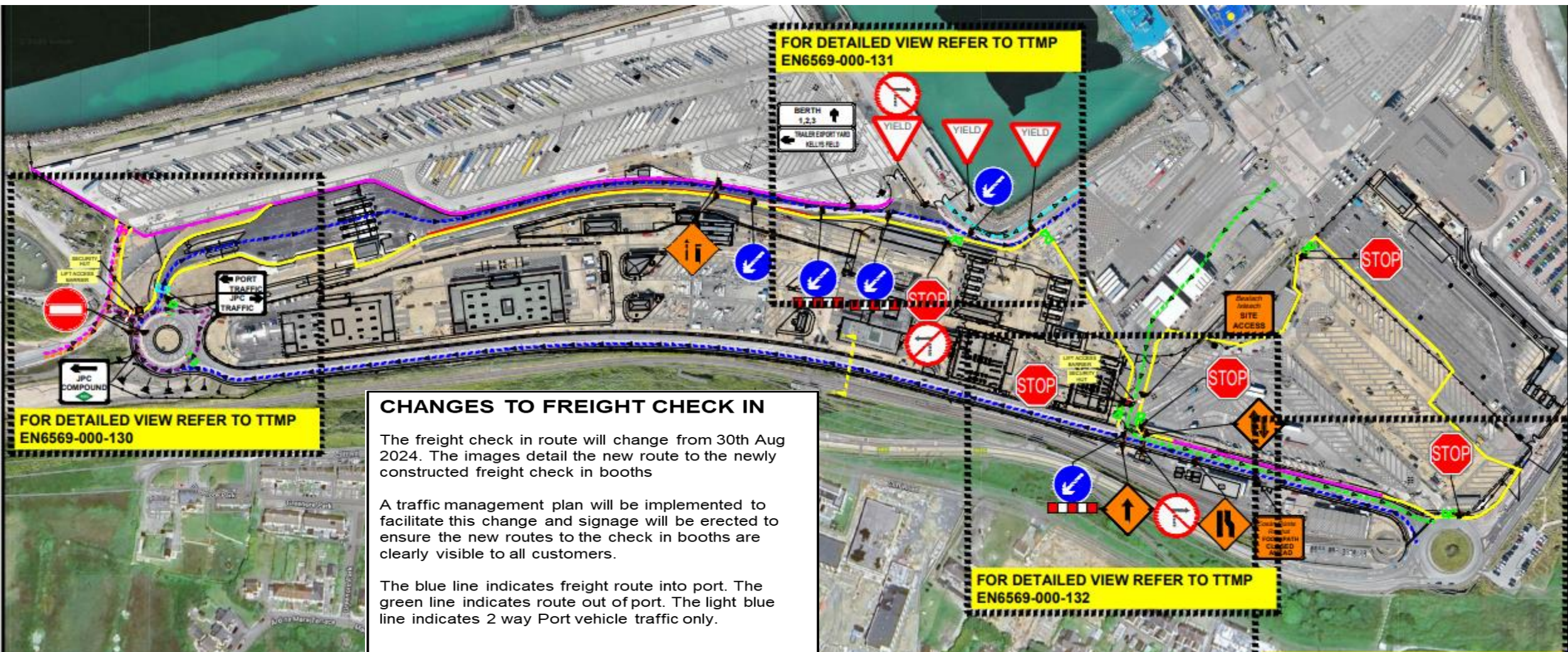
A traffic management plan will be implemented to facilitate this change and signage will be erected to ensure the new routes to the check in booths are clearly visible to all customers.

The blue indicates freight route into port. The green line indicates route out of port. The light blue line indicates segregated port Tug traffic.





## Traffic Routing Plan



**CHANGES TO FREIGHT CHECK IN**

The freight check in route will change from 30th Aug 2024. The images detail the new route to the newly constructed freight check in booths

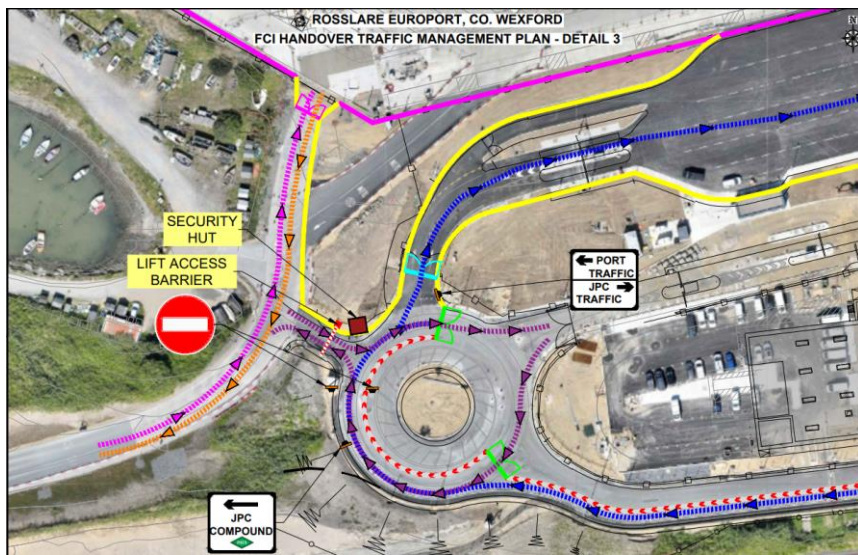
A traffic management plan will be implemented to facilitate this change and signage will be erected to ensure the new routes to the check in booths are clearly visible to all customers.

The blue line indicates freight route into port. The green line indicates route out of port. The light blue line indicates 2 way Port vehicle traffic only.

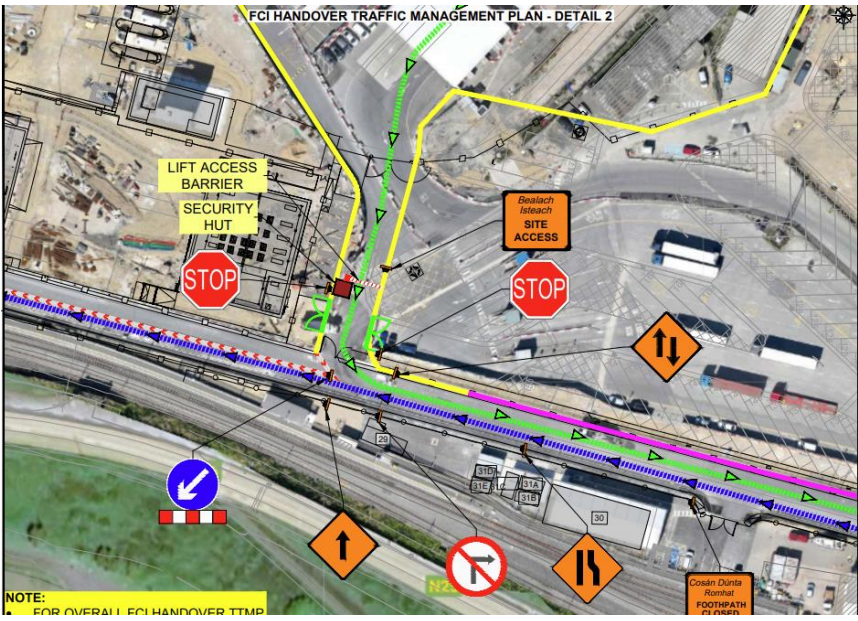


## MASTERPLAN UPDATE 12

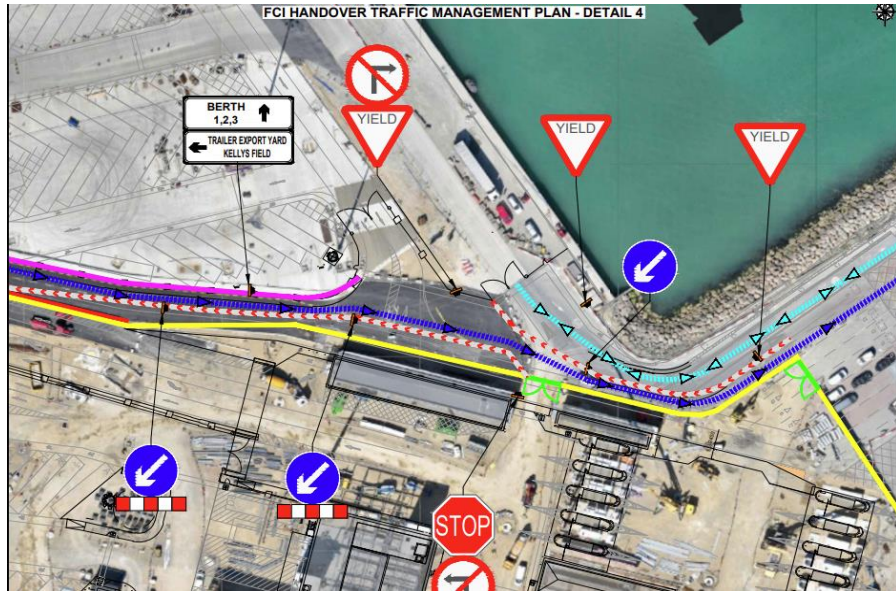
3



2



4



1

